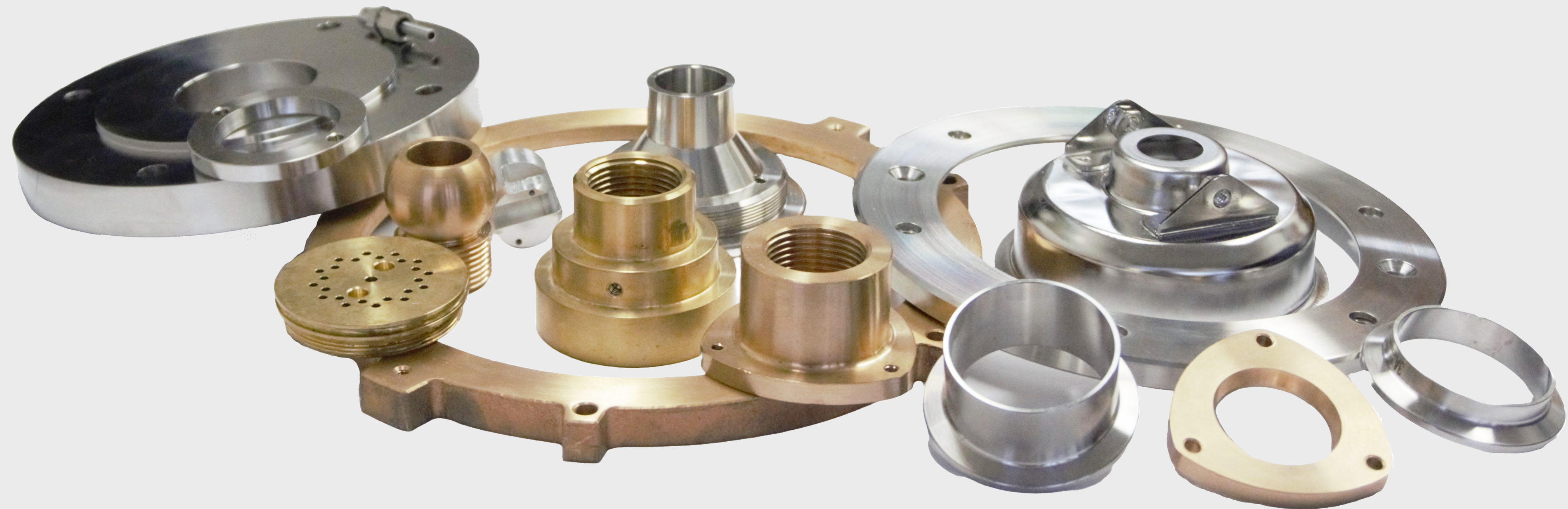




**MEDIT INTERNATIONAL**

*Global Sourcing Partner*



**Manufacturing Services**

**Local Services...  
Global Prices...**



# Global Sourcing Partner

## **COST SAVINGS**

- Cost savings of up to 20% or more over current Asian manufacturing and up to 50% over North America & Europe Manufacturing
- Direct pricing liberates the capital restraints on product development
- Established network of manufacturers across industries ensuring competitive pricing

## **GLOBAL EXPERTISE**

- In depth understanding of International business environment including regulatory framework
- In-house team of engineers with relevant experience and exposure to deal in International market
- Employees capable of understanding industry trends, advancement in technology, and the application of manufacturing know-how to supplier/management and purchasing operations





# At The Spotlight

## SUPPLIER NETWORK

- Sourcing from the best, the most suitable, proven and stable manufacturers who are ISO 9001:2015 and/or QS 9000 or TS 16949 or AS9100 certified
- Constant review of offers from alternative suppliers on behalf of our customers to ensure the best value is maintained
- Sound technical understanding & proven methodology for carrying out due diligence and audits among vendors
- Supplier management practices and vendor performance evaluation

## MANAGEMENT TEAM

- Financial strength and management commitment to foster partnerships with our customers
- Experienced business development personnel trained in engineering techniques to identify opportunities for improvement in our customers' products and processes

# Quality & Assurance

- The main criteria for qualifying and approving our manufacturing partners are QS9000/TS16949, AS9100 or at least ISO9001:2015
- Latest CNC machines and modern quality control equipment must be present at our vendors' facilities
- We usually visit and approve a potential vendor's facility before starting to import any product from them
- We provide PPAP Level 3 documents such as PFEMA, Control Plan, Capability Analysis, Gage R & R & Lab Accreditation for ensuring quality
- Our engineers and technicians re-inspect random parts at our facility before making final shipment to customer



# Products

# Casting



Medit offers a wide range of castings to suit the need of various customers of automotive, marine, and other industries. We can source castings using any of the following processes:

Centrifugal Casting • Die Casting • Gravity Casting • Investment Casting • Lost Wax Casting • Permanent Mold Casting • Sand Casting • Shell Mold Casting • Squeeze Casting

**MATERIALS AVAILABLE:** Zinc (Zamak #3 & #5), Aluminium (A380, A384, A356, & 6063), Magnesium (AZ-91D), Carbon & Stainless Steels, Alloy & Tool Steels, Copper Base & Aluminum Alloys, 17-4PH, and 17-7PH

**CAPACITY:** 100 to 1,200 Tons Presses plus Miniature Zinc.



Products

# CNC Machining

**MATERIALS AVAILABLE:** Carbon Steels, Alloy Steels, Stainless steels, Brass, Aluminum, Plastic & other materials as per customer requirement

**CAPABILITIES:** Complete Secondary Operation, Plating & Heat Treatment

**CAPACITY:** O.D from 1/8" ~ to 10" length from 1/2" ~ 24" (Turned Parts)





---

# Products

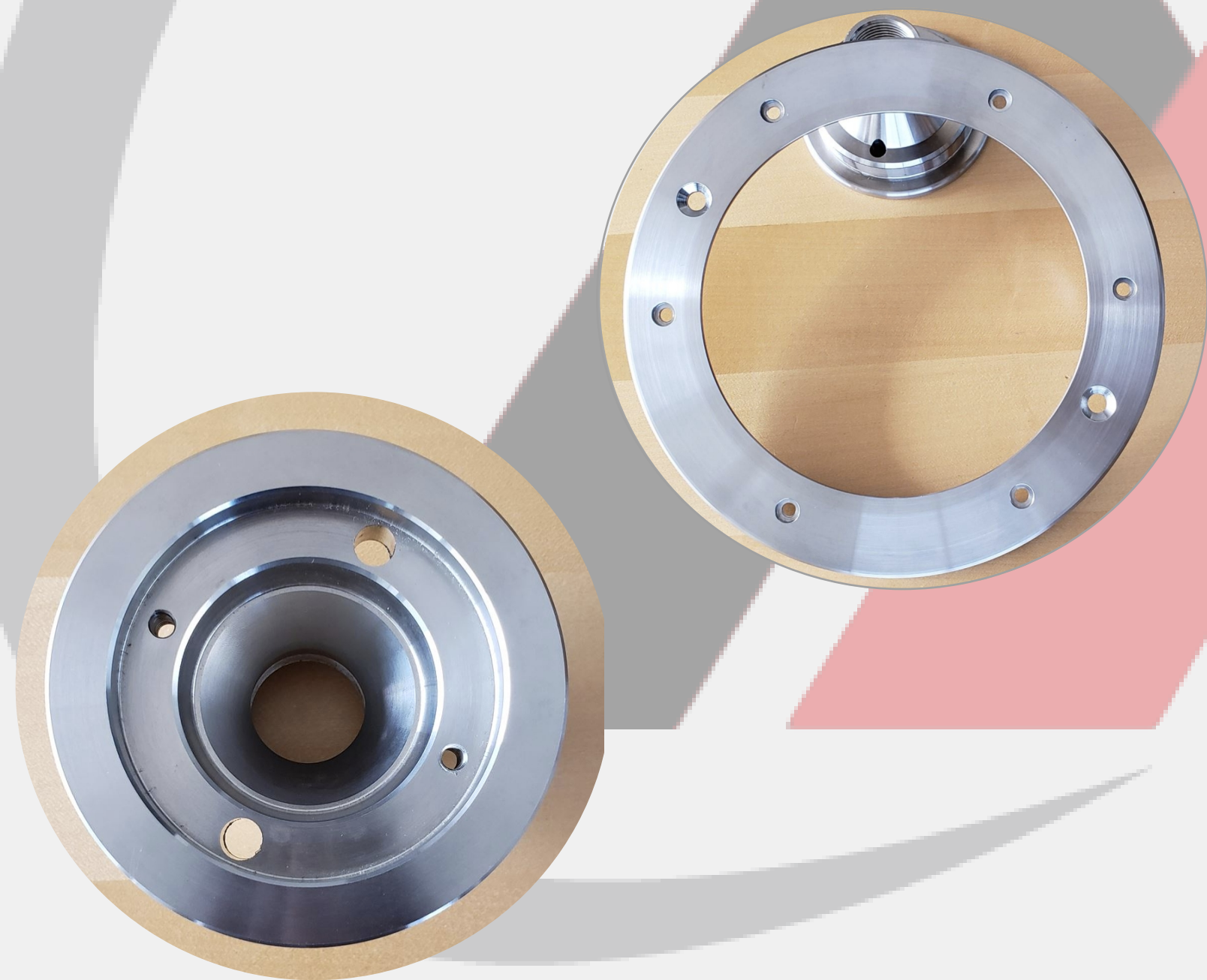
# Forging

Medit supplies a wide range of forgings for automotive, industrial, hoisting, and other OEM applications. Our manufacturing partners rigorously test the forgings we supply to provide the highest quality product. Our suppliers can make all necessary forging dies used on all the forging equipment

**MATERIALS AVAILABLE:** Aluminum, Brass, Bronze, Copper & Titanium Alloys, Carbon Steels, Stainless Steels, and Alloy Steels

**CAPABILITIES:** Chemical & Metallurgical Labs equipped with Optical Emission Spectrometer, X-Ray, Magnetic Particle Inspection, Mechanical Property Testing Facilities, Heat treating, and CNC Machining Facility

**CAPACITY:** We can supply forged items up to 70 lbs



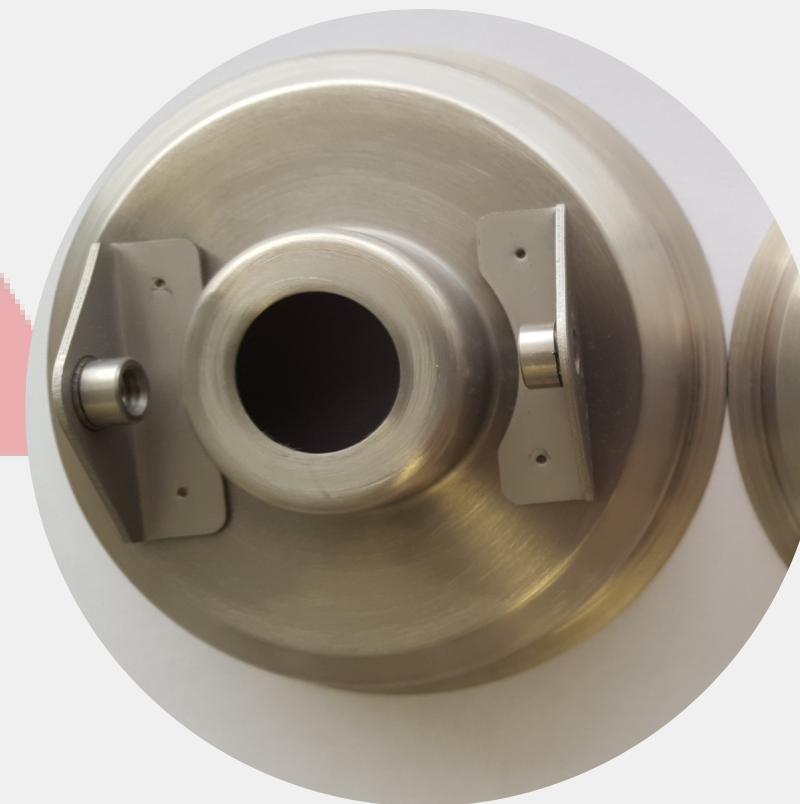
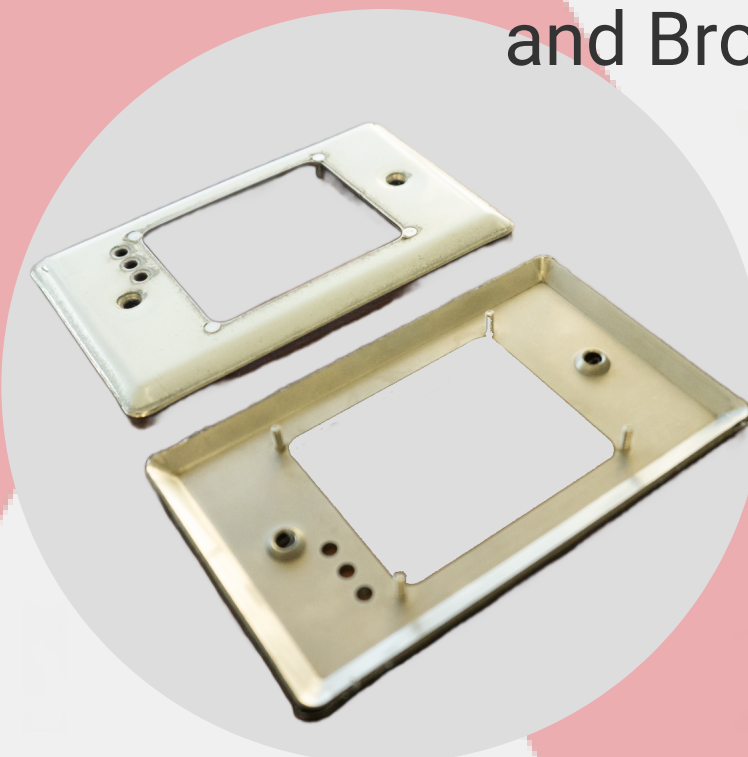
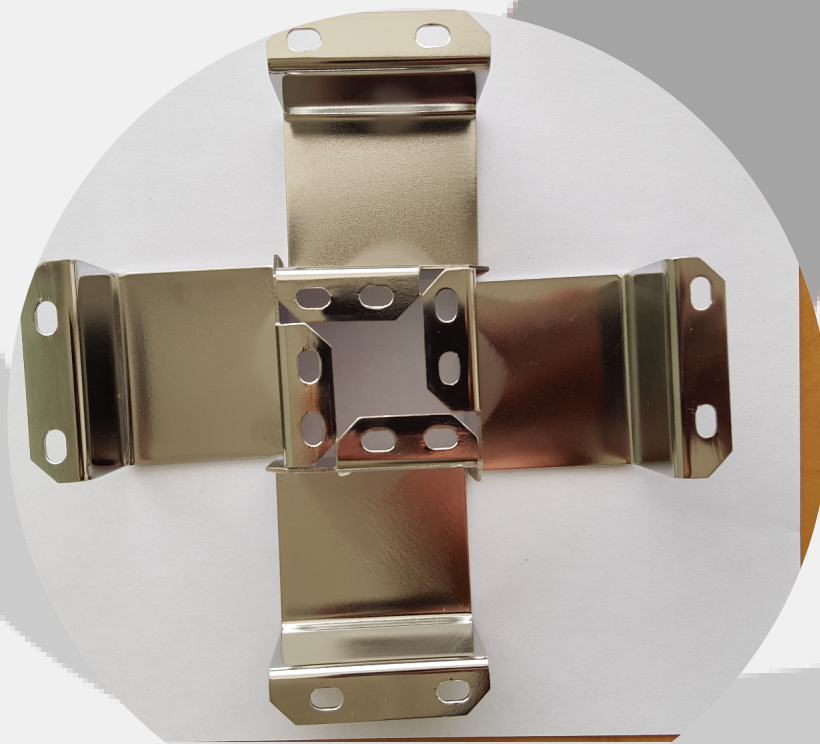


Products

# Metal Stamping

Medit offers metal stamping parts from simple press parts and transfer parts to complicated progressive die parts. The manufacturing process is controlled using computerized and automated systems. This guarantees high quality, while providing a high volume of production to suit your needs

**MATERIALS AVAILABLE:** Cold Rolled Steel, Stainless steel, Hot Rolled Steel, Aluminum & Copper Alloys, Brass, and Bronze Alloys





# Products

# Fabrication



MEDIT offers precise fabrication and assembly processes to accurately deliver complex and custom projects and contribute to our client's profitability. Our qualified suppliers' ability to fabricate nearly any metal components with precision and expedite assembly process

We offer complete fabrication to assembly using high-quality standards. Our services include CNC machining, metal fabrication, laser cutting, welding, punching, bending, etching, and finish process as per customer request

**RANGE OF MATERIAL:** Carbon & Alloy Steels, 200 & 400 series Stainless Steels, SS Duplex Alloy, Aluminum, Non-Ferrous materials include Brass & Copper

# Outsourcing

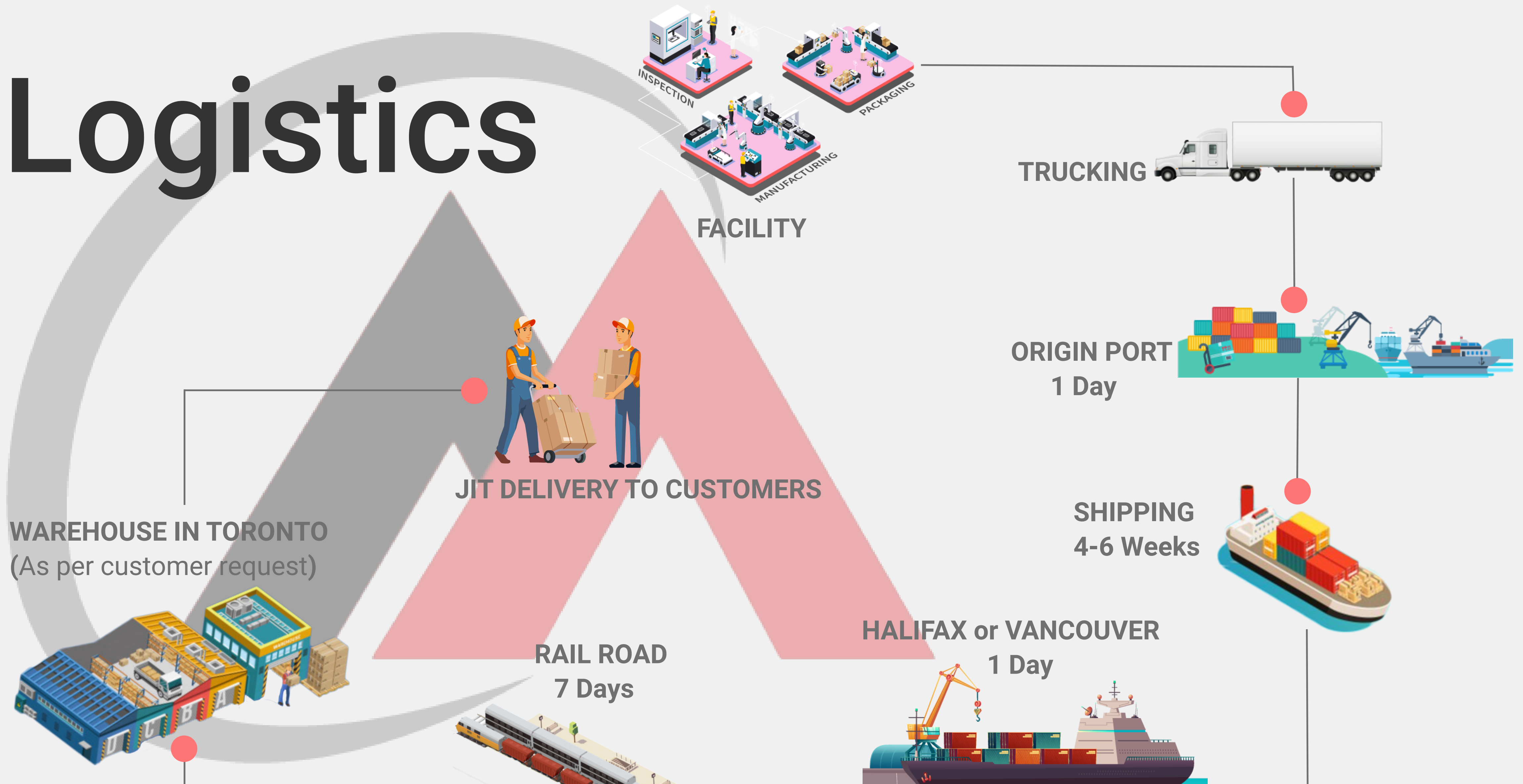
## Solutions available for any stage of your manufacturing outsourcing journey

No matter where you are on your journey, we have the solutions to meet the outcomes you want.

Not yet outsourcing	Considering outsourcing	Started outsourcing	Outsourcing locally	Outsourcing globally
Outsourcing total assessment & strategy				
Outsourcing total assessment & roadmap				
	Outsourcing locally & globally			
			Outsourcing cost optimization	



# Logistics



# The Right Partner in Global Sourcing

Contact us at [info@meditintl.com](mailto:info@meditintl.com) before making any order

☎ 905-290-0831

☎ 1-866-66-MEDIT (63348)

✉ [info@meditintl.com](mailto:info@meditintl.com)

🌐 [www.meditintl.com](http://www.meditintl.com)

📍 5800 Ambler Dr. Suite 200  
Mississauga, ON L4W 4J4  
Canada

📍 Seneca  
South Carolina  
USA

